

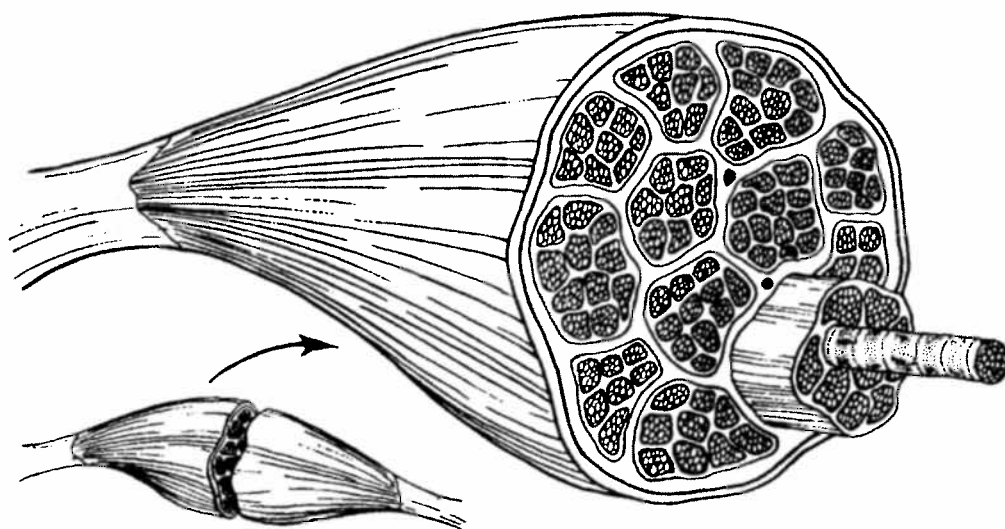
QUESTIONS

1. Match the structure with the correct description.

- | | |
|---|---------------|
| _____ The connective tissue that surrounds a muscle | A. Endomysium |
| _____ Connective tissue that encloses a bundle of muscle fibers | B. Epimysium |
| _____ Bundle of muscle fibers | C. Fascicle |
| _____ Connective tissue wrapped around each muscle fiber | D. Fiber |
| _____ Strong cord of fibrous connective tissue; extends from the muscle to the bone | E. Myofibril |
| _____ Muscle cell | F. Perimysium |
| _____ Smaller fibers that are found in a muscle fiber; consist of thick and thin myofilaments | G. Tendon |

2. Color the following parts on the diagrams below.

- | | | |
|-------------------------------------|---------------------------------|-------------------------------------|
| <input type="checkbox"/> Epimysium | <input type="checkbox"/> Fiber | <input type="checkbox"/> Endomysium |
| <input type="checkbox"/> Perimysium | <input type="checkbox"/> Tendon | |

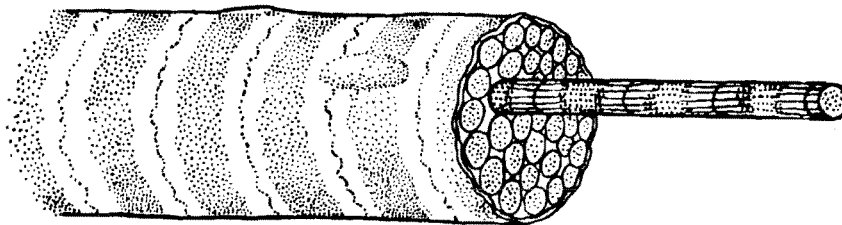


3. Match the structure with the correct description.

- | | |
|--|---------------------------|
| _____ Thick & thin threads found in myofibrils | A. Actin |
| _____ Thick myofilaments | B. Myofilaments |
| _____ Thin myofilaments | C. Myosin |
| _____ Plasma membrane surrounding each muscle fiber | D. Sarcolemma |
| _____ Specialized cytoplasm found in muscle fibers | E. Sarcomere |
| _____ Network of tubes and sacs; specialized endoplasmic reticulum | F. Sarcoplasm |
| _____ Series of tubular organelles that run across fibers; cross sarcoplasmic reticula at right angles | G. Sarcoplasmic reticulum |
| _____ Unit of muscle contraction | H. Transverse tubules |

4. Color the following parts on the diagram below.

- ☐ Z line ☐ A band ☐ I band



5. Color the following parts on the diagram below.

- ☐ myosin ☐ actin

